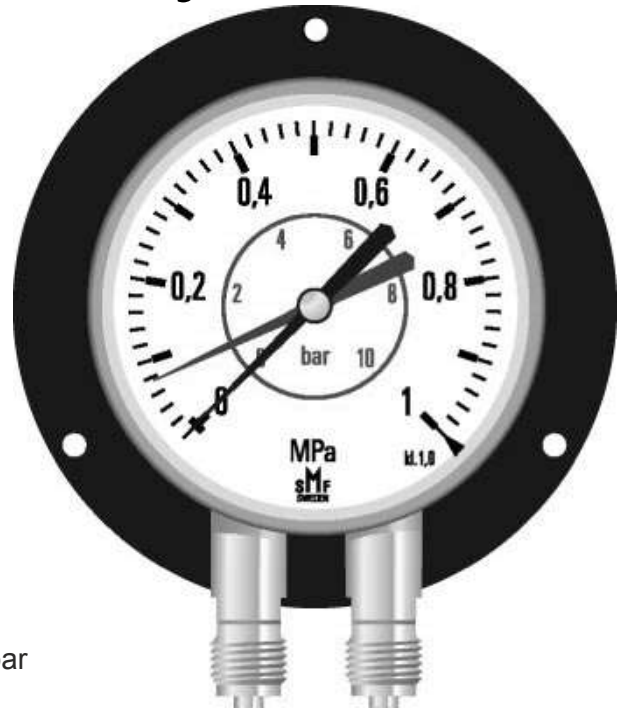


Pressure Gauge

Dual measurement system

- ▶ Used to easily follow the progress in, for example, brake cables, different water levels and similar.
Note - you can also have two different pressures/scales on the same instrument, for example, 0-10/0-40 bar.



Data

Size:	100 and 150 mm
Connection:	100 = G3/8" 150 = G1/4"
Scaling:	Double scale Bar/Pascal max 100 bar
Accuracy:	Class 1.0
Working pressure:	Full scale value for alternating load. With temporary and without pressure surges can end value exceeded by 30%.
Operating temperature:	-40 + 60°C
Protection class:	IP 54
Accessories:	Valves and connections
Special:	Different scales, (eg PSI, ton, etc.). Also available as precision pressure gauge, square and rectangular.
Manufacturer:	SMF



Svenska Manometerfabriken AB
Försäljning Tel 0247-141 45, Fax 0247-130 55