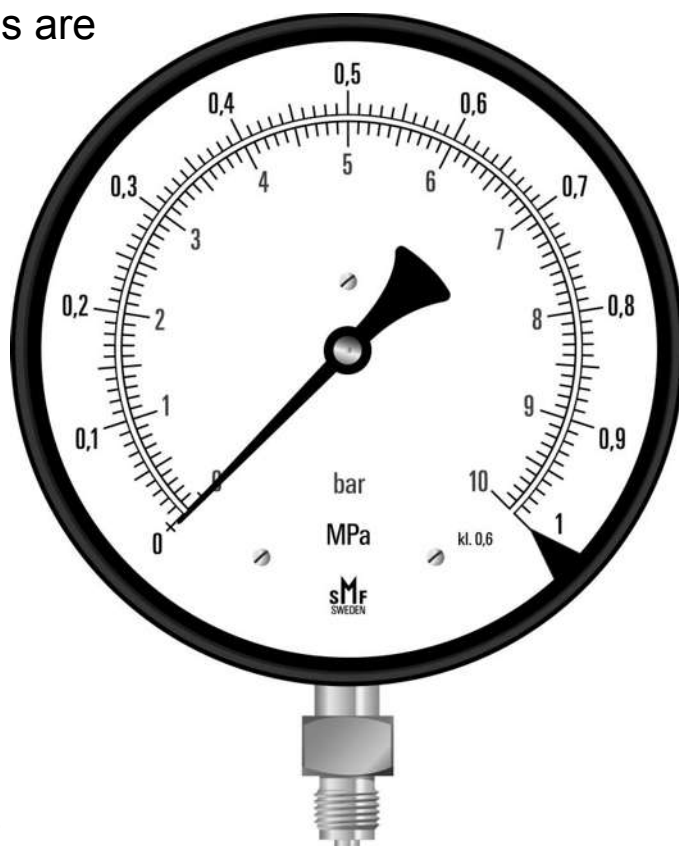


Pressure Gauge Precision

- SMF precision pressure gauges are intended to be used where it is needed high accuracy such as pressure measurement in laboratories, different testing devices, comparative measurement, calibration etc.

Note: For non-aggressive liquids and gases.



Data



Size:	160, 210 and 250 mm.
Connection:	G3/8"
Scaling:	Double Scale, BAR - PASCAL
Accuracy:	Class 0.6
Working pressure:	Full scale value at static load, 90% of the scale value for alternating load.
Operating Temperature:	< 60 bar = max 60 ° C 100-1600 bar = max 100 °
Protection class:	IP54
Accessories:	Knife edge pointer for optimal accuracy of reading with mirror scale, certificate of calibration with traceability to laboratory, test gauge kit 03260
Special:	Custom scale (eg PSI, ton, etc.), other threads.
Manufacturer:	SMF



Svenska Manometerfabriken AB
Försäljning Tel 0247-141 45, Fax 0247-130 55